

## SEALING FITTING EYS / EYK / EYD SERIES EXPLOSION PROOF


**BELGIUM**

A QUALITY PRODUCT

### APPLICATION

The ESB rectangular boxes are designed for the conduit system in hazardous areas and Zone 1 and 2

- : to provide opening for taps, splices or pull outlet for conductors.
- : to provide an access to conduit system for maintenance.
- : to change conduit direction.
- : to use with threaded rigid steel conduit (RSC) or intermediate metal conduit (IMC)

### TECHNICAL DATA

Explosion protection : Ex II 2 G Ex d IIB

Compliance with : IEC 60079-0/ 1 , EN61241-0/ 1

Degree of protection : IP65 acc to EN 60529 / IEC 60529

Ambient Temp. (Ta) : -20 °C to + 40 °C temp. class T6

: -20 °C to + 55 °C temp. class T5

Entries thread : NPT (optional ISO thread)

Protection class for U: Class I, Division 1 or 2 Group B,C,D

: Class II, Division 1 or 2 Groups E,F,G

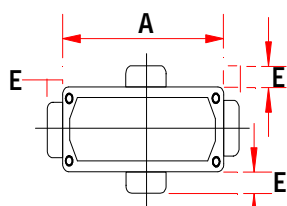
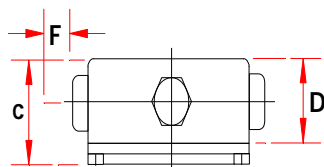
### SPECIFICATION

Body material : Marine grade copper-free aluminium alloy  
with polyester powder coated RAL 7032 (grey)

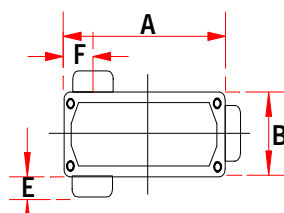
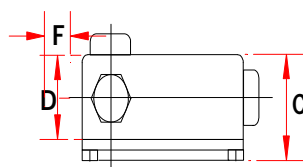
Lid screws : Stainless steel



### CATALOGUE NUMBER AND DIMENSION



Type ESB, ESBT, ESBX



Type ESB, ESBT, ESBX

Hub Size. NPT ( inch )	Cat.,No.	Dimension in mm.					
		A	B	C	D	E	F
1/2"	ESBB 1 ESBC 1 ESBL 1 ESBR 1 ESBT 1 ESBX 1	101	44	57	40	16	20
3/4"	ESBB 2 ESBC2 ESBL 2 ESBR 2 ESBT 2 ESBX 2	101	44	57	40	16	20
1"	ESBB 3 ESBC 3 ESBL 3 ESBR 3 ESBT 3 ESBX 3	119	60	68	52	22	23
1.1/4"	ESBB 4 ESBC 4 ESBL 4 ESBR 4 ESBT 4 ESBX 4	146	67	79	64	23	32
1.1/2"	ESBB 5 ESBC 5 ESBL 5 ESBR 5 ESBT 5 ESBX 5	178	77	86	71	25	35
2"	ESBB 6 ESBC 6 ESBL 6 ESBR 6 ESBT 6 ESBX 6	211	88	103	87	30	43
2.1/2"	ESBB 7 ESBC 7 ESBL 7 ESBR 7 ESBT 7 ESBX 7	246	119	135	116	36	53
3"	ESBB 8 ESBC 8 ESBL 8 ESBR 8 ESBT 8 ESBX 8	246	119	135	116	36	53
3.1/2"	ESBB 9 ESBC 9 ESBL 9 ESBR 9 ESBT 9 ESBX 9	310	175	190	173	36	77
4"	ESBB 10 ESBC 10 ESBL 10 ESBR 10 ESBT 10 ESBX 10	310	175	190	173	36	77